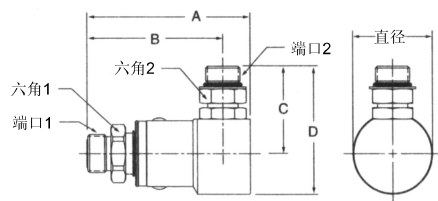


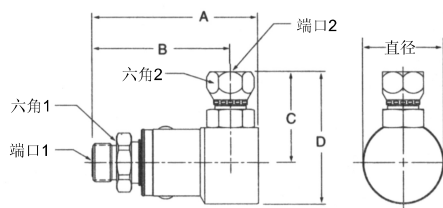
旋转接头

O形圈平面密封 - SAE O形圈直管外螺纹



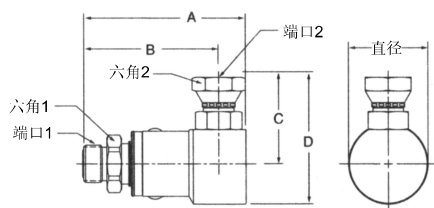
型号	A	B	C	D	直径	六角1	六角2	端口1	端口2
PS49JM05-4-4	2.99" 76.0mm	2.59" 65.7mm	1.38" 35.0mm	1.98" 50.2mm	1.20" 30.5mm	.75" 19.0mm	.56" 14.3mm	9/16-18 UNF-2A	7/16-20 UNF-2A
PS69JM05-6-6	3.27" 83.0mm	2.76" 70.0mm	1.55" 39.4mm	2.20" 55.8mm	1.29" 32.8mm	.88" 22.2mm	.69" 17.5mm	11/16-16 UN-2A	9/16-18 UNF-2A
PS89JM05-8-8	3.52" 89.5mm	2.93" 74.5mm	1.86" 47.2mm	2.72" 69.2mm	1.73" 44.0mm	1.12" 28.6mm	.88" 22.2mm	13/16-16 UN-2A	3/4-16 UNF-2A
PS129JM05-12-12	4.04" 102.6mm	3.37" 85.6mm	2.40" 61.0mm	3.49" 88.5mm	2.17" 55.2mm	1.38" 35.0mm	1.25" 31.8mm	1-3/16-12 UN-2A	1-1/16-12 UN-2A
PS169JM05-16-16	4.45" 113.0mm	3.58" 91.0mm	2.50" 63.4mm	3.74" 94.9mm	2.48" 63.0mm	1.62" 41.3mm	1.50" 38.1mm	1-7/16-12 UN-2A	1-5/16-12 UN-2A

O形圈平面密封 - 37扩口式内螺纹



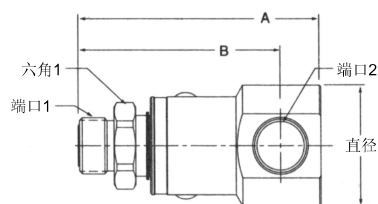
型号	A	B	C	D	直径	六角1	六角2	端口1	端口2
PS49JM06-4-4	2.99" 76.0mm	2.59" 65.7mm	1.47" 37.3mm	2.07" 52.5mm	1.20" 30.5mm	.75" 19.0mm	.56" 14.3mm	9/16-18 UNF-2A	7/16-20 UNF-2B
PS69JM06-6-6	3.27" 83.0mm	2.76" 70.0mm	1.57" 39.9mm	2.22" 56.3mm	1.29" 32.8mm	.88" 22.2mm	.69" 17.5mm	11/16-16 UN-2A	9/16-18 UNF-2B
PS89JM06-8-8	3.52" 89.5mm	2.93" 74.5mm	1.91" 48.4mm	2.77" 70.4mm	1.73" 44.0mm	1.12" 28.6mm	.88" 22.2mm	13/16-16 UN-2A	3/4-16 UNF-2B
PS129JM06-12-12	4.04" 102.6mm	3.37" 85.6mm	2.34" 59.4mm	3.43" 87.0mm	2.17" 55.2mm	1.38" 35.0mm	1.25" 31.8mm	1-3/16-12 UN-2A	1-1/16-12 UN-2B
PS169JM06-16-16	4.45" 113.0mm	3.58" 91.0mm	2.54" 64.6mm	3.79" 96.2mm	2.48" 63.0mm	1.62" 41.3mm	1.50" 38.1mm	1-7/16-12 UN-2A	1-5/16-12 UN-2B

O形圈平面密封 - NPSM管内螺纹旋转接头



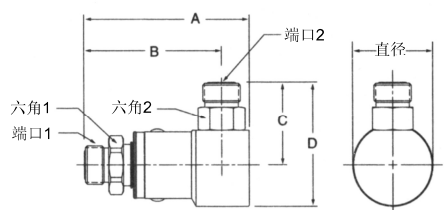
型号	A	B	C	D	直径	六角1	六角2	端口1	端口2
PS49JM07-4-4	2.99" 76.0mm	2.59" 65.7mm	1.48" 37.5mm	2.08" 52.8mm	1.20" 30.5mm	.75" 19.0mm	.69" 17.4mm	9/16-18 UNF-2A	1/4-18 NPSM
PS69JM07-6-6	3.27" 83.0mm	2.76" 70.0mm	1.51" 38.4mm	2.16" 54.8mm	1.29" 32.8mm	.88" 22.2mm	.88" 22.2mm	11/16-16 UN-2A	3/8-18 NPSM
PS89JM07-8-8	3.52" 89.5mm	2.93" 74.5mm	1.86" 47.2mm	2.72" 69.2mm	1.73" 44.0mm	1.12" 28.6mm	1.00" 25.4mm	13/16-16 UN-2A	1/2-14 NPSM
PS129JM07-12-12	4.04" 102.6mm	3.37" 85.6mm	2.24" 56.9mm	3.33" 84.5mm	2.17" 55.2mm	1.38" 35.0mm	1.25" 31.8mm	1-3/16-12 UN-2A	3/4-14 NPSM
PS169JM07-16-16	4.45" 113.0mm	3.58" 91.0mm	2.48" 63.1mm	3.73" 94.6mm	2.48" 63.0mm	1.62" 41.3mm	1.50" 38.1mm	1-7/16-12 UN-2A	1-11/16-12 NPSM

O形圈平面密封 - SAE内管螺纹



型号	A	B	直径	六角1	端口1	端口2
PS49JM10-4-4	2.99" 76.0mm	2.59" 65.7mm	1.20" 30.5mm	.75" 19.0mm	9/16-18 UNF-2A	7/16-20 UNF-2B
PS69JM10-6-6	3.27" 83.0mm	2.76" 70.0mm	1.29" 32.8mm	.88" 22.2mm	11/16-16 UN-2A	9/16-18 UNF-2B
PS89JM10-8-8	3.52" 89.5mm	2.93" 74.5mm	1.73" 44.0mm	1.12" 28.6mm	13/16-16 UN-2A	3/4-16 UNF-2B
PS129JM10-12-12	4.04" 102.6mm	3.37" 85.6mm	2.17" 55.2mm	1.38" 35.0mm	1-3/16-12 UN-2A	1-1/16-12 UN-2B
PS169JM10-16-16	4.45" 113.0mm	3.58" 91.0mm	2.48" 63.0mm	1.62" 41.3mm	1-7/16-12 UN-2A	1-5/16-12 UN-2B

O形圈平面密封 - O形圈平面密封



型号	A	B	C	D	直径	六角1	六角2	端口1	端口2
PS49JMJM-4-4	2.99" 76.0mm	2.59" 65.7mm	1.29" 32.5mm	1.89" 47.9mm	1.20" 30.5mm	.75" 19.0mm	.56" 14.3mm	9/16-18 UNF-2A	9/16-18 UNF-2A
PS69JMJM-6-6	3.27" 83.0mm	2.76" 70.0mm	1.40" 35.6mm	2.05" 52.0mm	1.29" 32.8mm	.88" 22.2mm	.69" 17.5mm	11/16-16 UN-2A	11/16-16 UN-2A
PS89JMJM-8-8	3.52" 89.5mm	2.93" 74.5mm	1.74" 44.1mm	2.60" 66.1mm	1.73" 44.0mm	1.12" 28.6mm	.88" 22.2mm	13/16-16 UN-2A	13/16-16 UN-2A
PS89JMJM-10-10	3.62" 92.0mm	3.03" 77.0mm	1.96" 49.9mm	2.83" 71.9mm	1.73" 44.0mm	1.12" 28.6mm	.88" 22.2mm	1-14 UN-2A	1-14 UN-2A
PS129JMJM-12-12	4.04" 102.6mm	3.37" 85.6mm	2.18" 55.4mm	3.27" 83.0mm	2.17" 55.2mm	1.38" 35.0mm	1.25" 31.8mm	1-3/16-12 UN-2A	1-3/16-12 UN-2A
PS169JMJM-16-16	4.45" 113.0mm	3.58" 91.0mm	2.34" 59.6mm	3.59" 91.1mm	2.48" 63.0mm	1.62" 41.3mm	1.50" 38.1mm	1-7/16-12 UN-2A	1-7/16-12 UN-2A