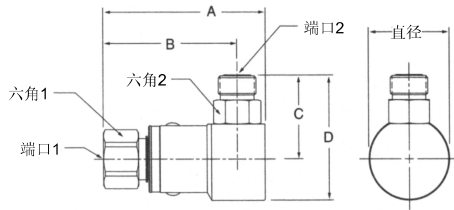


旋转接头

90°

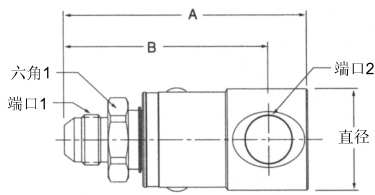
PS 系列

美制锥管内螺纹 - O形圈平面密封



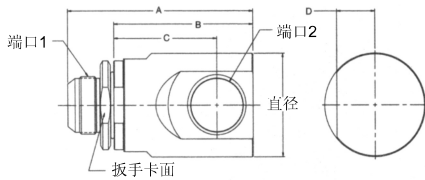
型号	A	B	C	D	直径	六角1	六角2	端口1	端口2
PS4902JM-4-4	2.87" 72.8mm	2.46" 62.5mm	1.29" 32.5mm	1.89" 47.9mm	1.20" 30.5mm	.75" 19.0mm	.56" 14.3mm	1/4-18 NPTF	9/16-20 UNF-2A
PS6902JM-6-6	3.19" 80.9mm	2.68" 68.0mm	1.40" 35.6mm	2.05" 52.0mm	1.29" 32.8mm	.88" 22.2mm	.69" 17.5mm	3/8-18 NPTF	11/16-18 UN-2A
PS8902JM-8-8	3.46" 87.8mm	2.87" 72.8mm	1.74" 44.1mm	2.60" 66.1mm	1.73" 44.0mm	1.12" 28.6mm	.88" 22.2mm	1/2-14 NPTF	13/16-16 UN-2A
PS12902JM-12-12	3.78" 96.0mm	3.11" 79.0mm	2.18" 55.4mm	3.27" 83.0mm	2.17" 55.2mm	1.38" 35.0mm	1.25" 31.8mm	3/4-14 NPTF	1-3/16-12 UN-2A
PS16902JM-16-16	4.32" 109.8mm	3.46" 87.9mm	2.34" 59.6mm	3.59" 91.1mm	2.48" 63.0mm	1.62" 41.3mm	1.50" 38.1mm	1/11 1/2 NPTF	1-7/16-12 UN-2A

37° 扩口式 - 美制锥管内螺纹



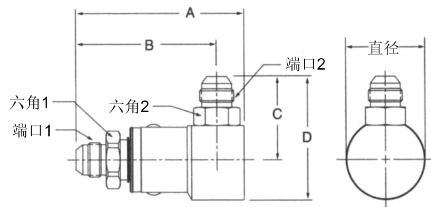
型号	A	B	直径	六角2	端口1	端口2
PS490302-4-4	3.14" 79.7mm	2.73" 69.4mm	1.20" 30.5mm	.75" 19.0mm	7/16-20 UNF-2A	1/4-18 NPTF
PS690302-6-6	3.39" 86.1mm	2.88" 73.2mm	1.29" 32.8mm	.88" 22.2mm	9/16-18 UNF-2A	3/8-18 NPTF
PS890302-8-8	3.67" 93.2mm	3.08" 78.2mm	1.49" 37.8mm	1.12" 28.6mm	3/4-16 UNF-2A	1/2-14 NPTF
PS1290302-12-12	4.21" 106.8mm	3.54" 89.8mm	1.76" 44.6mm	1.38" 35.0mm	1-1/16-12 UN-2A	3/4-14 NPTF
PS1690302-16-16	4.67" 118.7mm	3.81" 97.5mm	2.16" 54.9mm	1.62" 41.3mm	1-5/16-12 UN-2A	1-11 1/2 NPTF

三件式设计



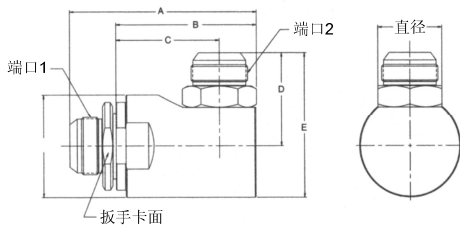
型号	A	B	C	D	扳手卡面	直径	端口1	端口2
PS2490302-20-20	6.16" 150.2mm	4.63" 117.5mm	3.43" 87.0mm	1.27" 32.3mm	2.63" 66.7mm	3.36" 85.2mm	1 5/8-12 UN-2A	1/4-11 1/2 NPTF
PS2490302-24-24	6.16" 150.2mm	4.63" 117.5mm	3.43" 87.0mm	1.27" 32.3mm	2.63" 66.7mm	3.36" 85.2mm	1 7/8-12 UN-2A	1/2-11 1/2 NPTF
PS2490302-32-32	7.38" 187.4mm	5.45" 138.4mm	3.93" 99.7mm	1.52" 38.5mm	3.06" 77.6mm	4.19" 106.4mm	2 1/2-12 UN-2A	2-11 1/2 NPTF

37° 扩口式 - 37° 扩口式



型号	A	B	C	D	直径	六角1	六角2	端口1	端口2
PS490303-4-4	3.14" 79.7mm	2.73" 69.4mm	1.39" 35.2mm	1.99" 50.5mm	1.20" 30.5mm	.75" 19.0mm	.56" 14.3mm	7/16-20 UNF-2A	7/16-20 UNF-2A
PS690303-6-6	3.39" 86.1mm	2.88" 73.2mm	1.44" 36.6mm	2.09" 53.0mm	1.29" 32.8mm	.88" 22.2mm	.69" 17.5mm	9/16-18 UNF-2A	9/16-18 UNF-2A
PS890303-8-8	3.67" 93.2mm	3.08" 78.2mm	1.78" 45.1mm	2.64" 67.1mm	1.73" 44.0mm	1.12" 28.6mm	.88" 22.2mm	3/4-16 UNF-2A	3/4-16 UNF-2A
PS890303-10-10	3.77" 95.8mm	3.18" 80.8mm	1.90" 48.4	2.77" 70.4mm	1.73" 44.0mm	1.12" 28.6mm	.88" 22.2mm	7/8-14 UNF-2A	7/8-14 UNF-2A
PS1290303-12-12	4.21" 106.8mm	3.54" 89.8mm	2.24" 56.9mm	3.86" 98.3mm	2.17" 55.2mm	1.38" 35.0mm	1.25" 31.8mm	1-1/16-12 UN-2A	1-1/16-12 UN-2A
PS1690303-16-16	4.67" 118.7mm	3.81" 97.5mm	2.42" 61.3mm	3.66" 92.9mm	2.48" 63.0mm	1.62" 41.3mm	1.50" 38.1mm	1-5/16-12 UN-2A	1-5/16-12 UN-2A

三件式设计



型号	A	B	C	D	E	六角	扳手卡面	直径	端口1	端口2
PS2490303-20-20	6.16" 156.4mm	4.63" 117.5mm	3.43" 87.0mm	2.85" 72.4mm	4.53" 115.0mm	1.88" 47.6mm	2.63" 66.7mm	3.36" 85.2mm	1 5/8-12 UN-2A	1 5/8-12 UN-2A
PS2490303-24-24	5.81" 157.1mm	4.65" 118.2mm	3.43" 87.0mm	3.05" 77.6mm	4.73" 120.2mm	2.13" 54.0mm	2.63" 66.7mm	3.36" 85.2mm	1 7/8-12 UN-2A	1 7/8-12 UN-2A
PS32490303-32-32	7.44" 189.0mm	5.51" 140.4mm	3.93" 99.7mm	3.70" 94.0mm	5.80" 147.2mm	2.75" 69.8mm	3.06" 77.6mm	4.19" 106.4mm	2 1/2-12 UN-2A	2 1/2-12 UN-2A